



## Introducing the NEC RSenCounter 4000 Point of Sale Solution . . .

### Hardware Designed For the Restaurant Industry

The low profile, space saving design integrates a 132-position keyboard and a 20-line operator screen into an intelligent and compact terminal. By connecting reliable traditional smart terminals to industry standard open system components, you can avoid many of the high hidden-costs of technology ownership.

### Rock Solid Reliability

The proven technology used in the NEC RSenCounter 4000 provides years of reliable service, with less disruption of service and lower maintenance costs than touch screen systems. The highest quality keyboard overlay seals the keyboard from spills and will always look as good as the day it was installed.

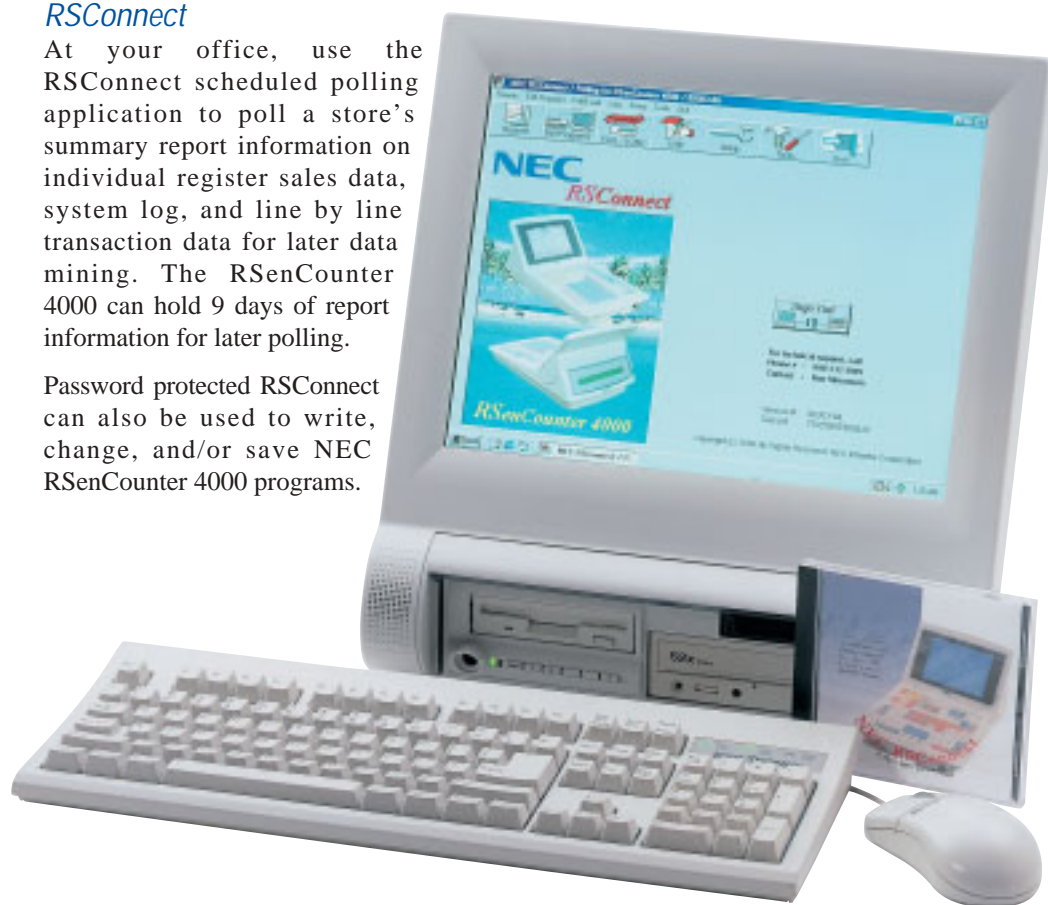
### No Single Point of Failure

NEC RSenCounter 4000 stations are fully independent and intelligent standalone stations—they do not depend on a back-room computer to operate. Because you don't have a PC server on site, you don't need to staff network administration skills at each store. You'll never reboot and disrupt operations. When updates are needed, flash ROM technology provides non-volatile software storage.

### RSConnect

At your office, use the RSConnect scheduled polling application to poll a store's summary report information on individual register sales data, system log, and line by line transaction data for later data mining. The RSenCounter 4000 can hold 9 days of report information for later polling.

Password protected RSConnect can also be used to write, change, and/or save NEC RSenCounter 4000 programs.



### Open System Architecture

NEC RSenCounter 4000 stations and our kitchen video system communicate with each other on an industry standard Ethernet LAN. Peripherals such as printers, drive-thru order confirmation screens, pole displays, coin dispensers, scanners and modems use industry standard RS-232C connections.

### Time and Attendance

Built into your POS system is fully featured time and attendance system that provides payroll ready data for your in-house payroll system or payroll service. You get critical labor reporting, including sales/labor percentage and transactions per man-hour. Information is easily accessible by store managers for real time staff management.

- Authority levels by job code.
- Handles weekly, bi-weekly, bi-monthly, or monthly payroll periods.

- Allows editing of actual punches for entire payroll period.
- Records up to five shifts per employee per day.

## For Quick Service



### Kitchen Video

Items may be grouped, sorted, and displayed at different stations for drive-thru, food preparation or expeditor applications.

- Send orders when finalized, on subtotal, with one item delay, or immediately when the item is chosen.
- Up to 8 color videos may be included in each system.
- One video can display a maximum of 8 orders at a time and retain 300 orders in the system.
- Switch kitchen video routing at any station.
- Switch video screen display modes at the bump bar.
- Speed of service by time period reporting.
- Power fail protection system.
- Exception routing.
- Alternate descriptor capability.

### Drive-Thru Function

Orders are automatically moved to the cashier station from the order taking station. Both stations view three orders simultaneously. You can change the order at the cashier station, with changes reflected at the appropriate kitchen display. Multiple drive thru lanes are supported. Drive thru service time is displayed on each order and reported for the system. A separate tracking system for phone in orders can be used.



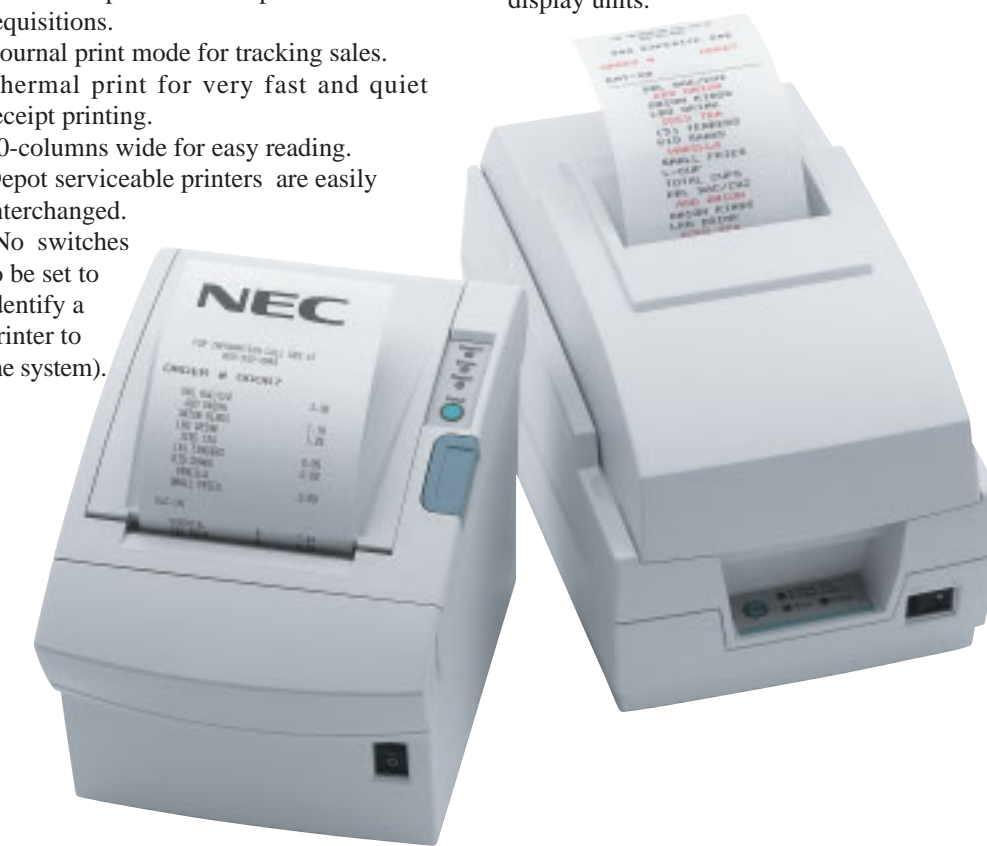
### Flexible Printing Capabilities

You can take advantage of current technology by choosing from a variety of heavy duty, depot serviceable, thermal and dot-matrix printers.

- Industry standard RS-232C interface.
- Two-color print for receipts and kitchen requisitions.
- Journal print mode for tracking sales.
- Thermal print for very fast and quiet receipt printing.
- 40-columns wide for easy reading.
- Depot serviceable printers are easily interchanged. (No switches to be set to identify a printer to the system).

### Additional Quick Service Features

- Automatic or optional auto-combo and buy one-get one free with netted pricing on items.
- Built-in inventory software provides store level ingredient inventory control and costing.
- Temporarily hold counter orders for indecisive customers.
- Economical credit card integration eliminates separate credit card terminals, duplicate operations, and additional printers.
- Product Mix Groups count key stock items such as chicken pieces or cups.
- Compatible with order confirmation display units.



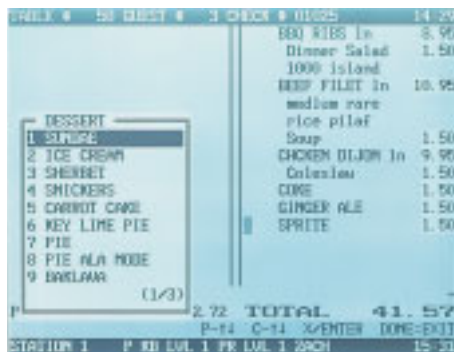
## For Hospitality

### Soft Check

Eliminate the cost of custom printed guest checks. Each item of each check is maintained in memory for editing or printing at any time. Service keys can be configured to finalize with or without check printing and checks can be printed with or without the programmable trailer message.

### Split Screen Display

The 20-line, split screen display enhances your view of large orders (up to 300 items can be stored in one check.) The adjustable back-lit display is easy to see in bright or dark environments.



### Unique Menu Look-up Function For Fast Accurate Order Entry

Large, complex menus can be simplified by defining one key to access hundreds of possible choices. For example a key labeled "dessert" can display your dessert options, with nine items visible at one time.

### Additional Features

- The Transfer Check function quickly shifts guest check accountability from one server to another.
- Checks can be split and/or separated by seat assignments.
- The Server Close function can print a server's sales report, open check report, and punch the server out – all in one simple operation.
- The Repeat Order function can automatically enter the next round of drinks.
- The Hold Order function allows items to be entered without sending them to kitchen printers.
- The Continue function allows servers to quickly post multiple checks.
- Roll-up pricing can be implemented to include the price of the condiment in the main item price.
- Enhanced Time Keeping allows daily record editing for each day of the pay period.
- Economical credit card integration.
- Special Item stock tracks availability of daily specials.
- The Adjust Tender key allows incorrect tendering to be adjusted.
- Built-in inventory software provides store level ingredient inventory control and costing.
- Human Resources maintenance includes employee file, time/attendance, job codes, pay rate tables, and enhanced authority level control.
- Daily and Period-to-date tip allocation reporting.

## SPECIFICATIONS

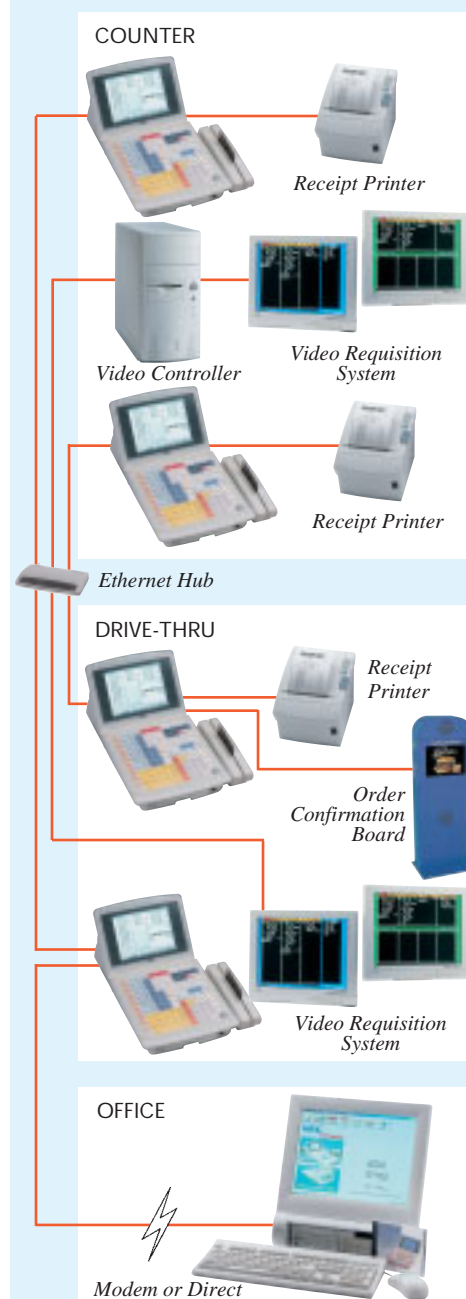
<b>Memory ROM:</b>	3 MB (Flash)
<b>Standard RAM:</b>	1 MB
<b>Maximum RAM:</b>	3 MB w/2 MB Option Board; 5MB w/4 MB Option Board
<b>LCD Type:</b>	640 x 480 Dots Full VGA
<b>Operator Display:</b>	52 Characters x 20 Lines
<b>Customer Display:</b>	20 Characters x 1 Line Backlit
<b>Keyboard:</b>	132 Key Flat Spill Resistant Keyboard
<b>RS-232C/Options:</b>	3/5
<b>LAN/Protocol:</b>	Ethernet / TCP/IP-Proprietary
<b>LAN Speed:</b>	10 Mbps

All product features are subject to change without notice.

Advanced Data Technologies & Design, Inc  
207 N Locust  
Grand Island NE 68801  
(308) 384-3379  
(877) 238-4951

Printed in U.S.A.

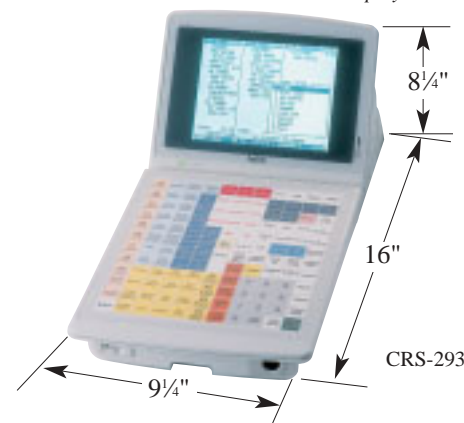
## SYSTEM CONFIGURATION



Up to 24 Terminals Per System  
Up to 5 Printers Per Terminal



Standard backlit LCD customer display.



CRS-293

**CRS**  
System Sales Division  
2909 Anthony Lane N.E.  
Minneapolis, Minnesota 55418  
612/781-3474